

RIGOR

Cold work tool steel

COLD WORK

PLASTIC MOULDING

HOT WORK

HIGH PERFORMANCE STEEL



This information is based on our present state of knowledge and is intended to provide general notes on our products and their uses. It should not therefore be construed as a warranty of specific properties of the products described or a warranty for fitness for a particular purpose.

General

Rigor is an air- or oil hardening chromium-molybdenum-vanadium alloyed tool steel characterized by:

- Good machinability
- High stability after hardening
- High compressive strength
- Good hardenability
- Good wear resistance.

Typical analysis %	C 1,0	Si 0,3	Mn 0,6	Cr 5,3	Mo 1,1	V 0,2
Standard specification	AISI A2, BA2, W.-Nr. 1.2363, Euro X 100 CrMoV 5					
Delivery condition	Soft annealed to approx. 215 HB					
Colour code	Red/green					

Applications

Rigor takes a place in the Uddeholm tool steel range between Arne and Sverker 21, offering an excellent combination of good wear resistance and toughness. It may be regarded, therefore, as a "universal" cold work steel.

For cutting operations the good toughness of Rigor gives excellent resistance to chipping of the cutting edge. In many cases tools made from this steel have given better tooling economy than high-carbon, high-chromium steels of the BD3/W.-Nr. 2080 type. Rigor has much better machining and grinding properties.

CUTTING

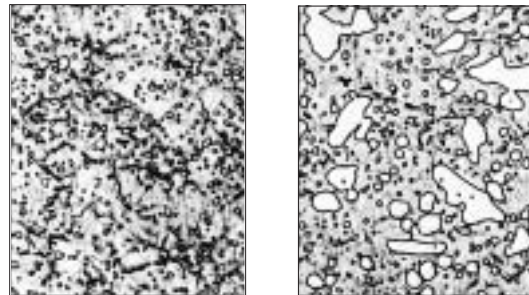
	Material thickness mm	Hardness HRC
<i>Tools for:</i> Blanking, punching, piercing, cropping, shearing, trimming, clipping	up to 3 mm (1/8")	60–62
	3–6 mm (1/8–1/4")	56–60
	6–10 mm (1/4–13/32")	54–56
Short cold shears Rotary shear blades for plastic waste		56–60
Clipping, trimming tools for forgings	Hot	58–60
	Cold	56–58

FORMING

	Hardness HRC
<i>Tools for:</i> Bending, raising, deep-drawing, rim-rolling, spinning and flow-turning	56–62
Coining dies	56–60
Tube- and section forming rolls	58–62
Master hobs for cold hobbing	58–60
Swaging blocks	56–60
Gauges, measuring tools, guide rails bushes, sleeves	58–62
Dies and inserts for moulding tablets, abrasive plastics	58–62

Availability

Rigor can be supplied in various finishes, including the hot-rolled, pre-machined and fine-machined condition. It is also available in the form of hollow bar and rings.



Comparison of fine-grained Rigor with high-carbon, high-chromium steel of the D3/W.-Nr. 2080 type.

Properties

PHYSICAL DATA

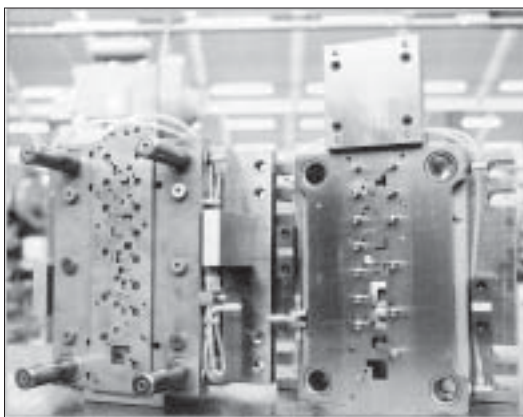
Hardened and tempered to 62 HRC. Data at room temperature and elevated temperatures.

Temperature	20°C (68°F)	200°C (375°F)	400°C (750°F)
Density kg/m ³ lbs/in ³	7 750 0,279	7 700 0,277	7 650 0,275
Modulus of elasticity N/mm ² psi	190 000 27,5 x 10 ⁶	185 000 26,9 x 10 ⁶	170 000 24,6 x 10 ⁶
Coefficient of thermal expansion per °C from 20°C per °F from 68°F	— —	11,6 x 10 ⁻⁶ 6,5 x 10 ⁻⁶	11,3 x 10 ⁻⁶ 6,3 x 10 ⁻⁶
Thermal conductivity W/m °C Btu in/(ft ² h °F)	26,0 181	27,0 188	28,5 199
Specific heat J/kg °C Btu/lb °F	460 0,11	— —	— —

COMPRESSIVE STRENGTH

Approximate values.

Hardness	Rc0,2	
	Nmm ²	ksi
62 HRC	2200	319
60 HRC	2150	312
55 HRC	1800	261
50 HRC	1350	196



Heat treatment

SOFT ANNEALING

Protect the steel and heat through to 850°C (1560°F). Then cool in the furnace at 10°C (20°F) per hour to 650°C (1200°F), then freely in air.

STRESS RELIEVING

After rough machining the tool should be heated through to 650°C (1200°F), holding time 2 hours. Cool slowly to 500°C (930°F), then freely in air.

HARDENING

Preheating temperature: 650–750°C (1200–1300°F)

Austenitizing temperature: 925–970°C (1690–1780°F) but usually 940–960°C (1720–1760°F).

Temperature °C °F		Soaking* time min.	Hardness before tempering
925	1700	40	approx. 63 HRC
950	1740	30	approx. 64 HRC
970	1780	20	approx. 64 HRC

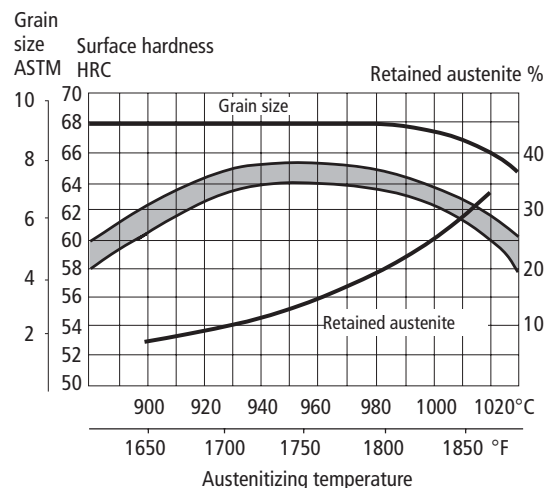
* Soaking time = time at hardening temperature after the tool is fully heated through.

Protect the part against decarburization and oxidation during hardening.

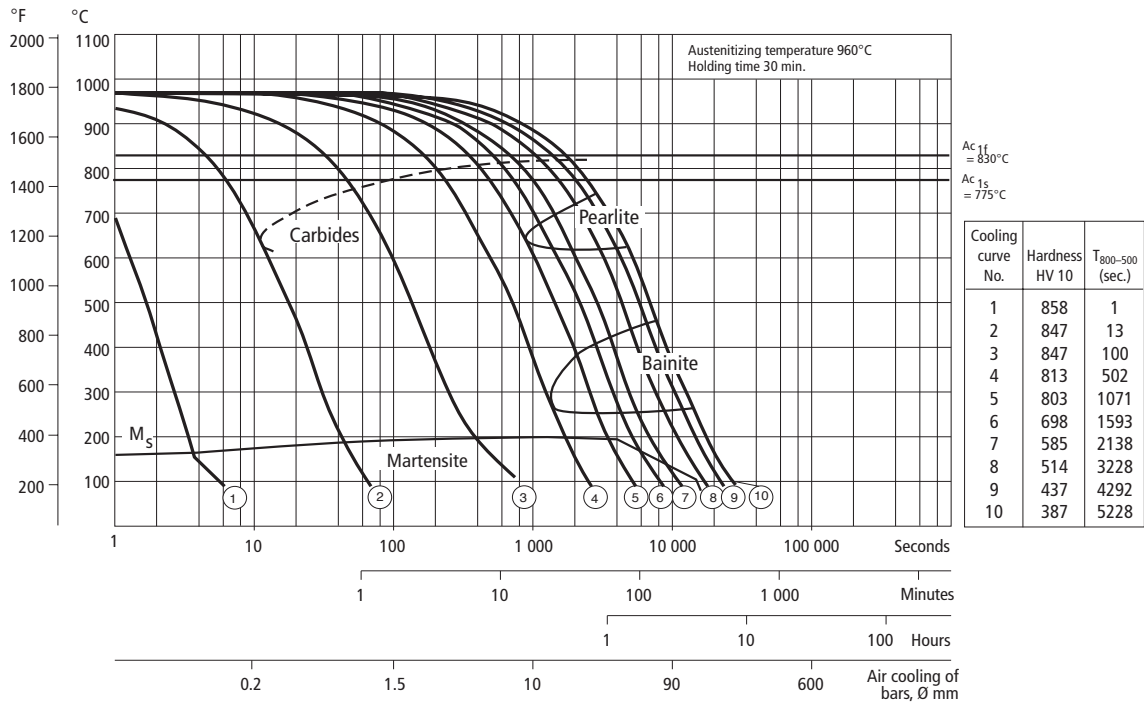
QUENCHING MEDIA

- Martempering bath or fluidized bed at 180–220°C (360–430°F) or 450–550°C (840–1020°F) then cool in air
- Circulating air or atmosphere
- Vacuum furnace with overpressure of gas at cooling
- Oil (only for small and uncomplicated tools).

Hardness as a function of hardening temperature.



CCT graph



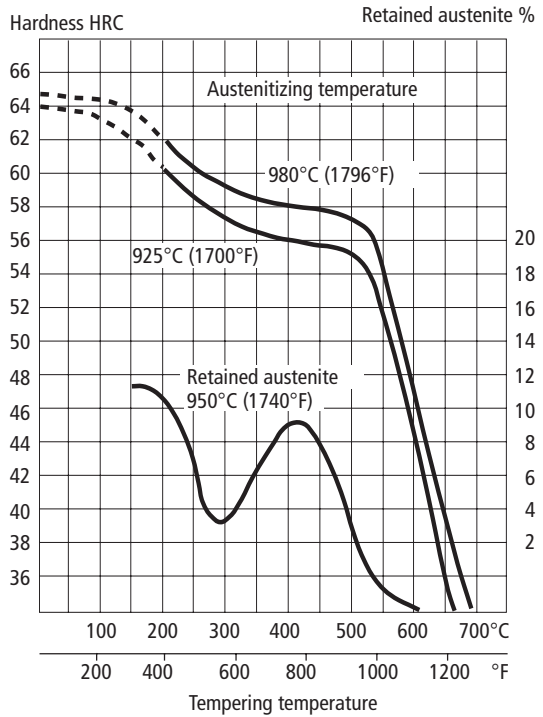
TEMPERING

Choose the tempering temperature according to the hardness required by reference to the tempering graph. Temper twice with intermediate cooling to room temperature. Lowest tempering temperature 180°C (360°F). Holding time at temperature minimum 2 hours.



Transfer mould with Rigor inserts to produce encapsulated electronic components.

The tempering graphs are valid for small samples. The hardness received is also dependent on the tool size.



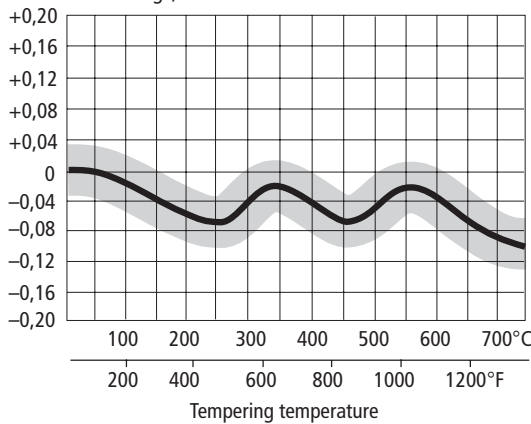
DIMENSIONAL CHANGES DURING HARDENING

Sample plate, 100 x 100 x 25 mm, 4" x 4" x 1".

		Width %	Length %	Thickness %
Oil hardening from 960°C (1760°F)	min. max.	-0,10 -0,05	-0,02 +0,06	-0,05
Martempering from 960°C (1760°F)	min. max.	+0,04 +0,05	+0,06 +0,08	+0,04
Air hardening from 960°C (1760°F)	min. max.	+0,08 +0,14	+0,13 +0,15	+0,04

DIMENSIONAL CHANGES DURING TEMPERING

Dimensional change, %



Note: The dimensional changes on hardening and tempering should be added together.



This tool was made from Rigor. 3 million parts were manufactured before the tool was reground.

SUB-ZERO TREATMENT AND AGING

Pieces requiring maximum dimensional stability should be sub-zero and/or artificially aged as volume changes may arise in the course of time. This applies, for example, to measuring tools like gauges and certain structural components.

Sub-zero treatment

Immediately after quenching, the piece should be sub-zero refrigerated to between -40 and -80°C (between -40 and -110°F) followed by tempering or aging. Sub-zero refrigeration for 2-3 hours will give a hardness increase of 1-3 HRC. Avoid intricate shapes as there is a risk of cracking.

Aging

Tempering after quenching is replaced by aging at 110-140°C (230-285°F). Holding time 25-100 hours.

NITRIDING

Nitriding will give a hard diffused surface layer which is very resistant to wear and erosion, and also increases corrosion resistance. Nitriding in ammonia gas at a temperature of 525°C (975°F) gives a surface hardness of approx. 1000 HV₁.

Nitriding temperature		Nitriding time hours	Depth of case, approx.	
°C	°F		mm	in.
525	980	20	0,2	0,008
525	980	30	0,3	0,012
525	980	60	0,4	0,016

2 hours nitrocarburizing treatment at 570°C (1060°F) gives a surface hardness of approx. 900 HV₁. The case depth having this hardness will be 10-20 µm (0,0004-0,0008").

Machining recommendations

The cutting data below, valid for Rigor in soft annealed condition, are to be considered as guiding values which must be adapted to existing local conditions.

TURNING

Cutting data parameters	Turning with carbide		Turning with high speed steel Fine turning
	Rough turning	Fine turning	
Cutting speed (v_c) m/min f.p.m.	100–160 335–525	160–210 525–690	18–23 60–75
Feed (f_z) mm/r i.p.r.	0,2–0,4 0,008–0,016	0,05–0,2 0,002–0,008	0,05–0,3 0,002–0,012
Depth of cut (a_p) mm inch	2–4 0,08–0,16	0,5–2 0,02–0,08	0,5–2 0,02–0,08
Carbide designation ISO US	P20–P30 C6–C5 Coated carbide	P10 C7 Coated carbide or cermet	–

MILLING

Face and square shoulder milling

Cutting data parameters	Milling with carbide	
	Rough milling	Fine milling
Cutting speed (v_c) m/min f.p.m.	130–200 425–655	200–240 655–785
Feed (f_z) mm/tooth inch/tooth	0,2–0,4 0,008–0,016	0,1–0,2 0,004–0,008
Depth of cut (a_p) mm inch	2–4 0,08–0,16	–2 –0,08
Carbide designation ISO US	P20–P40 C6–C5 Coated carbide	P10–P20 C7–C6 Coated carbide or cermet

End milling

Cutting data parameters	Type of milling		
	Solide carbide	Carbide indexable insert	High speed steel
Cutting speed (v_c) m/min f.p.m.	80–120 260–395	120–170 395–560	15–20 ¹⁾ 50–65 ¹⁾
Feed (f_z) mm/tooth inch/tooth	0,03–0,20 ²⁾ 0,001–0,008 ²⁾	0,08–0,20 ²⁾ 0,003–0,008 ²⁾	0,05–0,35 ²⁾ 0,002–0,014 ²⁾
Carbide designation ISO US	–	P20–P40 C6–C5	–

¹⁾ For coated HSS end mill $v_c = 30–35$ m/min. (100–115 f.p.m./min.)

²⁾ Depending on radial depth of cut and cutter diameter.

DRILLING

High speed steel twist drill

Drill diameter		Cutting speed (v_c)		Feed (f)	
mm	inch	m/min	f.p.m.	mm/r	i.p.r.
– 5	–3/16	14–16*	45–50*	0,05–0,15	0,002–0,006
5–10	3/16–3/8	14–16*	45–50*	0,15–0,20	0,006–0,008
10–15	3/8–5/8	14–16*	45–50*	0,20–0,25	0,008–0,010
15–20	5/8–3/4	14–16*	45–50*	0,25–0,35	0,010–0,014

¹⁾ For coated HSS drill $v_c = 24–26$ m/min. (80–85 f.p.m./min.)

Carbide drill

Cutting data parameters	Type of drill		
	Indexable insert	Solide carbide	Brazed carbide ¹⁾
Cutting speed (v_c) m/min f.p.m.	150–170 490–560	80–100 260–330	50–60 165–195
Feed (f) mm/r i.p.r.	0,05–0,25 ²⁾ 0,002–0,01 ²⁾	0,10–0,25 ²⁾ 0,004–0,01 ²⁾	0,15–0,25 ²⁾ 0,006–0,01 ²⁾

¹⁾ Drill with internal cooling channels and brazed carbide tip.

²⁾ Depending on drill diameter.

GRINDING

General grinding wheel recommendation for Rigor is given below. More information can be found in the Uddeholm brochure "Grinding of Tool Steel".

Type of grinding	Wheel recommendation	
	Soft annealed condition	Hardened condition
Face grinding straight wheel	A 46 HV	A 46 HV
Face grinding segments	A 24 GV	A 36 GV
Cylindrical grinding	A 46 LV	A 60 KV
Internal grinding	A 46 JV	A 60 IV
Profile grinding	A 100 KV	A 120 JV

Welding

Good results when welding tool steel can be achieved if proper precautions are taken during welding (elevated working temperature, joint preparation, choice of consumables and welding procedure). If the tool is to be polished or photo-etched, it is necessary to work with an electrode type of matching composition.

Welding method	Working temperature	Consumables	Hardness after welding
MMA (SMAW)	200–250°C (390–480°F)	AWS E312 ESAB OK 84.52 UTP 67S Castolin 2 Castolin N 102	300 HB 53–54 HRC 55–58 HRC 54–60 HRC 54–60 HRC
TIG	200–250°C (390–480°F)	AWS ER312 UTPA 67S UTPA 73G2 Castotig 5	300 HB 55–58 HRC 53–56 HRC 60–64 HRC

Electrical-discharge machining–EDM

If EDM is performed in the hardened and tempered condition, the tool should then be given an additional temper at about 25°C (50°F) below the previous tempering temperature.

Further information

Please contact your local Uddeholm office for further information on the selection, heat treatment, application and availability of Uddeholm tool steels, including the publications “Steels for Cold Work Tooling”.

Relative comparison of Uddeholm cold work tool steel

MATERIAL PROPERTIES AND RESISTANCE TO FAILURE MECHANISMS

Uddeholm grade	Hardness/ Resistance to plastic deformation	Machin- ability	Grind- ability	Dimension stability	Resistance to		Fatigue cracking resistance	
					Abrasive wear	Adhesive wear	Ductility/ resistance to chipping	Toughness/ gross cracking
ARNE	████	██████	██████	██	████	████	████	████
CALMAX	████	██████	██████	████	████	████	██████	██████
CALDIE	██████	██████	██████	████	████	████	██████	██████
RIGOR	████	██████	████	████	████	████	██	████
SLEIPNER	██████	██████	████	████	████	████	██	████
SVERKER 21	████	██████	██	████	████	██	██	████
SVERKER 3	████	██	██	████	██████	██	██	██
VANADIS 4 Extra	██████	██████	████	██████	████	████	██████	████
VANADIS 6	██████	██	██	██████	████	████	████	██
VANADIS 10	██████	██	██	██████	████	████	████	██
VANADIS 23	██████	████	████	██████	████	████	████	██

UDDEHOLM EUROPE

AUSTRIA

UDDEHOLM
Hansaallee 321
D-40549 Düsseldorf
Telephone: +49 211 535 10
Telefax: +49 211 535 12 80

BELGIUM

UDDEHOLM N.V.
Waterstraat 4
B-9160 Lokeren
Telephone: +32 9 349 11 00
Telefax: +32 9 349 11 11

CROATIA

BOHLER UDDEHOLM Zagreb
d.o.o za trgovinu
Zitnjak b.b
10000 Zagreb
Telephone: +385 1 2459 301
Telefax: +385 1 2406 790

CZECHIA

BOHLER UDDEHOLM CZ s.r.o.
Division Uddeholm
U silnice 949
161 00 Praha 6 Ruzyne
Czech Republic
Telephone: +420 233 029 850,8
Telefax: +420 233 029 859

DENMARK

UDDEHOLM A/S
Kokmose 8, Bramdrupdam
DK-6000 Kolding
Telephone: +45 75 51 70 66
Telefax: +45 75 51 70 44

ESTONIA

UDDEHOLM TOOLING AB
Silikatsiidid 7
EE-0012 Tallinn
Telephone: +372 655 9180
Telefax: +372 655 9181

FINLAND

OY UDDEHOLM AB
Ritakuja 1, PL 57,
FIN-01741 VANTAA
Telephone: +358 9 290 490
Telefax: +358 9 2904 9249

FRANCE

UDDEHOLM S.A.
12 Rue Mercier, Z.I. de Mitry-Compans
F-77297 Mitry Mory Cedex
Telephone: +33 (0)1 60 93 80 10
Telefax: +33 (0)1 60 93 80 01

Branch office

UDDEHOLM S.A.
77bis, rue de Vesoul
La Nef aux Métiers
F-25000 Besançon
Telephone: +33 381 53 12 19
Telefax: +33 381 53 13 20

GERMANY

UDDEHOLM
Hansaallee 321
D-40549 Düsseldorf
Telephone: +49 211 535 10
Telefax: +49 211 535 12 80

Branch offices

UDDEHOLM
Falkenstraße 21
D-65812 Bad Soden/TS.
Telephone: +49 6196 659 60
Telefax: +49 6196 659 625

UDDEHOLM
Albstraße 10
D-73765 Neuhausen
Telephone: +49 715 898 65-0
Telefax: +49 715 898 65-25

GREAT BRITAIN, IRELAND

UDDEHOLM UK LIMITED
European Business Park
Taylors Lane, Oldbury
West Midlands B69 2BN
Telephone: +44 121 552 55 11
Telefax: +44 121 544 29 11

Dublin Telephone: +353 1 45 14 01

GREECE

UDDEHOLM STEEL TRADING
COMPANY
20, Athinon Street
G-Piraeus 18540
Telephone: +30 2 10 41 72 109/41 29 820
Telefax: +30 2 10 41 72 767

SKLERO S.A.

Steel Trading Comp. and
Hardening Shop
Frixou 11/Nikif., Ouranou
G-54627 Thessaloniki
Telephone: +30 31 51 46 77
Telefax: +30 31 54 12 50

HUNGARY

UDDEHOLM TOOLING/BOK
Dunaharaszti, Jedlik Ányos út 25
H-2331 Dunaharaszti 1.Pf. 110
Telephone/Telefax: +36 24 492 690

ITALY

UDDEHOLM Italia S.p.A.
Via Palizzi, 90
I-20157 Milano
Telephone: +39 02 35 79 41
Telefax: +39 02 390 024 82

LATVIA

UDDEHOLM TOOLING AB
Deglava street 50
LV-1035 Riga
Telephone: +371 7 701 983, -981, -982
Telefax: +371 7 701 984

LITHUANIA

UDDEHOLM TOOLING AB
BE PLIENAS IR METALAI
T. Masiulio 18b
LT-3014 Kaunas
Telephone: +370 37 370613, -669
Telefax: +370 37 370300

THE NETHERLANDS

UDDEHOLM B.V.
Isolatorweg 30
NL-1014 AS Amsterdam
Telephone: +31 20 581 71 11
Telefax: +31 20 684 86 13

NORWAY

UDDEHOLM A/S
Jernkroken 18
Postboks 85, Kalbakken
N-0902 Oslo
Telephone: +47 22 91 80 00
Telefax: +47 22 91 80 01

POLAND

INTER STAL CENTRUM
Sp. z o.o./Co. Ltd.
ul. Kolejowa 291, Dziekanów Polski
PL-05-092 Lomianki
Telephone: +48 22 429 2260
Telefax: +48 22 429 2266

PORTUGAL

F RAMADA Aços e Industrias S.A.
P.O. Box 10
P-3881 Ovar Codex
Telephone: +351 56 58 61 11
Telefax: +351 56 58 60 24

ROMANIA

BOHLER Romania SRL
Uddeholm Branch
Str. Atomistilor Nr 14A
077125 Magurele Jud Ilfov
Telephone: +40 214 575007
Telefax: +40 214 574212

RUSSIA

UDDEHOLM TOOLING CIS
25 A Bolshoy pr PS
197198 St. Petersburg
Telephone: +7 812 233 9683
Telefax: +7 812 232 4679

SLOVAKIA

UDDEHOLM Slovakia
Nástrojové ocele, s.r.o.
KRÁCINY 2
036 01 Martin
Telephone: +421 842 4 300 823
Telefax: +421 842 4 224 028

SLOVENIA

UDDEHOLM Italia S.p.A.
Via Palizzi, 90
I-20157 Milano
Telephone: +39 02 35 79 41
Telefax: +39 02 390 024 82

SPAIN

UDDEHOLM
Guifré 690-692
E-08918 Badalona, Barcelona
Telephone: +34 93 460 1227
Telefax: +34 93 460 0558

Branch office

UDDEHOLM
Barrio San Martin de Arteaga, 132
Pol.Ind. Torrelarragoiti
E-48170 Zamudio
(Bizkaia)
Telephone: +34 94 452 13 03
Telefax: +34 94 452 13 58

SWEDEN

UDDEHOLM TOOLING
SVENSKA AB
Aminogatan 25
SE-431 53 Mölndal
Telephone: +46 31 67 98 50
Telefax: +46 31 27 02 94

SWITZERLAND

HERTSCH & CIE AG
General Wille Strasse 19
CH-8027 Zürich
Telephone: +41 1 208 16 66
Telefax: +41 1 201 46 15

UDDEHOLM NORTH AMERICA

USA

UDDEHOLM
4902 Tollview Drive
Rolling Meadows IL 60008
Telephone: +1 847 577 22 20
Telefax: +1 847 577 80 28

UDDEHOLM

548 Clayton Ct.,
Wood Dale IL 60191
Telephone: +1 630 350 10 00
Telefax: +1 630 350 08 80

UDDEHOLM

9331 Santa Fe Springs Road
Santa Fe Springs, CA 90670
Telephone: +1 562 946 65 03
Telefax: +1 562 946 77 21

UDDEHOLM

220 Cherry Street
Shrewbury, MA 01545
Telephone: +1 508 845 1066
Telefax: +1 508 845 3471

CANADA

UDDEHOLM LIMITED
2595 Meadowvale Blvd.
Mississauga, Ontario L5N 7Y3
Telephone: +1 905 812 9440
Telefax: +1 905 812 8659

MEXICO

ACEROS BOHLER UDDEHOLM,
S.A. de C.V.
Calle 8 No 2, Letra "C"
Fraccionamiento Industrial Alce Blanco
C.P. 52787 Naucalpan de Juarez
Estado de Mexico
Telephone: +52 55 9172 0242
Telefax: +52 55 5576 6837

UDDEHOLM

Lerdo de Tejada No.542
Colonia Las Villas
66420 San Nicolas de Los Garza, N.L.
Telephone: +52 8-352 5239
Telefax: +52 8-352 5356

UDDEHOLM SOUTH AMERICA

ARGENTINA

UDDEHOLM S.A
Mozart 40
1619-Centro Industrial Garin
Garin-Prov. Buenos Aires
Telephone: +54 332 744 4440
Telefax: +54 332 745 3222

BRAZIL

UDDEHOLM ACOS ESPECIAIS Ltda.
Estrada Yae Massumoto, 353
CEP 09842-160
Sao Bernardo do Campo - SP Brazil
Telephone: +55 11 4393 4560, -4554
Telefax: +55 11 4393 4561

UDDEHOLM SOUTH AFRICA

UDDEHOLM Africa (Pty) Ltd.
P.O. Box 539
ZA-1600 Isando/Johannesburg
Telephone: +27 11-974 2781
Telefax: +27 11-392 2486

UDDEHOLM AUSTRALIA

BOHLER-UDDEHOLM Australia
129-135 McCredie Road
Guildford NSW 2161
Private Bag 14
Telephone: +61 2 9681 3100
Telefax: +61 2 9632 6161

Branch offices

Sydney, Melbourne, Adelaide,
Brisbane, Perth, Newcastle,
Launceston, Albury, Townsville

ASSAB

ASSAB INTERNATIONAL

Skytteholmsvägen 2
P O Box 42
SE-171 11 Solna
Sweden
Telephone: +46 8 564 616 70
Telefax: +46 8 25 02 37

Subsidiaries

India, Iran, Turkey, United Arab
Emirates

Distributors in

Africa, Latin America, Middle East

ASSAB PACIFIC

ASSAB Pacific Pte. Ltd
171, Chin Swee Road
No. 07-02, San Centre
Singapore 169877
Telephone: +65 534 56 00
Telefax: +65 534 06 55

Subsidiaries

China, Hong Kong, Indonesia, Japan,
Korea, Malaysia, Philippine Islands,
Singapore, Taiwan, Thailand

When the first idea pops into your head, throughout the development process to the release of the new product, we'll be your partner.

As the world's leading supplier of tooling materials and related services, we can be trusted. Meet us under the Uddeholm and ASSAB brands, wherever in the world you have your business.

